

BRANCHBURG, NEW JERSEY

Former: Coesia Group

335 Chambers Brook Road - Somerset County



OFFERED FOR LEASE:



Loading Area

- ❖ Available – 8/1/2020
- ❖ 19,890sf. Total (3,645sf. on 2nd Floor)
- ❖ Warehouse / Lab / Manufacturing
- ❖ 6,595sf. Office on 1st Floor
- ❖ 26' Clear Ceiling Height
- ❖ Clear Span - No Columns
- ❖ Land Area = 4.1 Acres
- ❖ 1 Loading dock (can add 1 more)
- ❖ 1 Drive-in door (12' x 14')
- ❖ Parking = 30 Cars
- ❖ City Water, Sewer, Natural Gas
- ❖ Built in 2012 = 400 Amps
- ❖ Near Routes; 22, 28, 78, 80 & I-287
- ❖ Property Taxes = \$58,400.50 (2019)

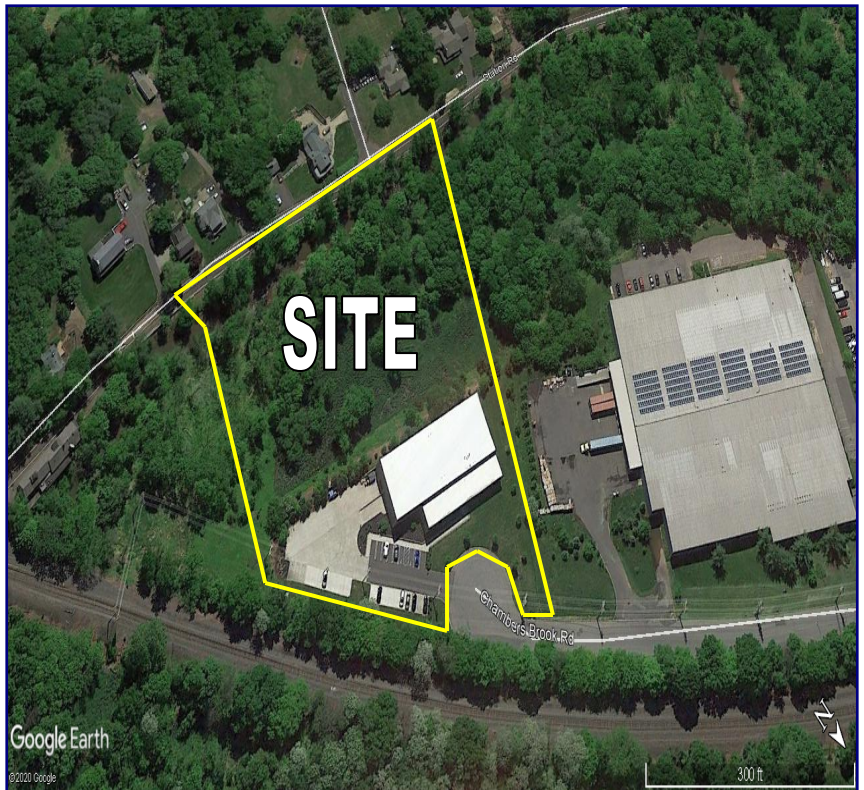
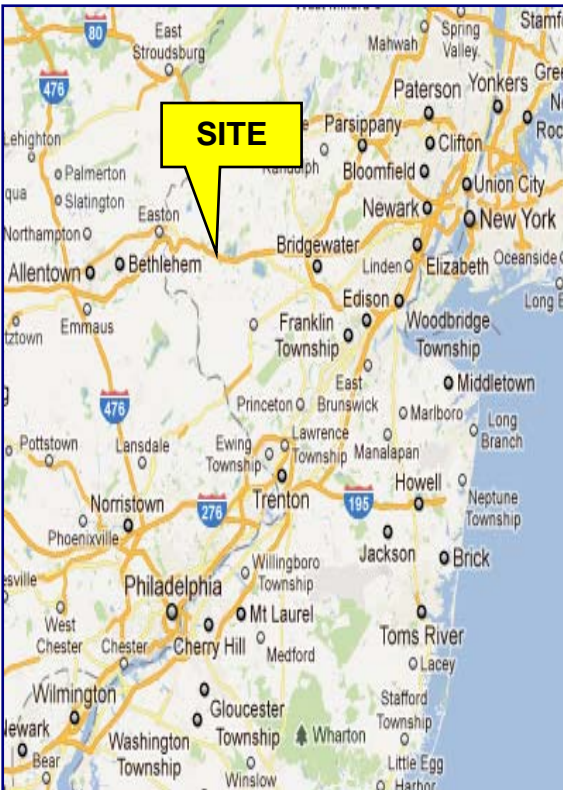
Please Contact:
PETER GALLICCHIO
President Ext: 102
Cell: 732-713-0227
Peter@RemcoRealty.net



370 Campus Drive, Suite #128, Somerset, NJ 08873
T: 732-253-0888 F: 732-253-0887 www.RemcoRealty.net



Another Remco Exclusive Offering!



Information provided herein was obtained from sources deemed reliable. No warranty or representation is made by Remco as to the accuracy thereto. All information SHOULD BE VARIFIED INDEPENDANTLY BY THE PROSPECT prior to proceeding. Same is hereby submitted subject to errors, omissions, change of price or measurements, or withdrawal without notice.