



FOR SALE

40,000sf Neighborhood Shopping Center
515 Brick Boulevard, Brick Twp. NJ



Please Contact Exclusive Broker:

PETER GALLICCHIO / President
pgallicchio@RemcoRealty.net
(732) 253-0888 Ext: 11
Cell: (732) 713-0227



The information contained herein has been given to us by the owner of the property or other sources we deem reliable. We have no reason to doubt its accuracy, but we do not guarantee it. All information should be verified prior to purchase or lease.



FOR SALE

40,000sf Neighborhood Shopping Center
515 Brick Boulevard, Brick Twp. NJ



Please Contact :
PETER GALLICCHIO
President Ext : 11
Cell: 732-713-0227
pgallicchio@RemcoRealty.net

= Exclusive Broker =



= Boulevard Square =

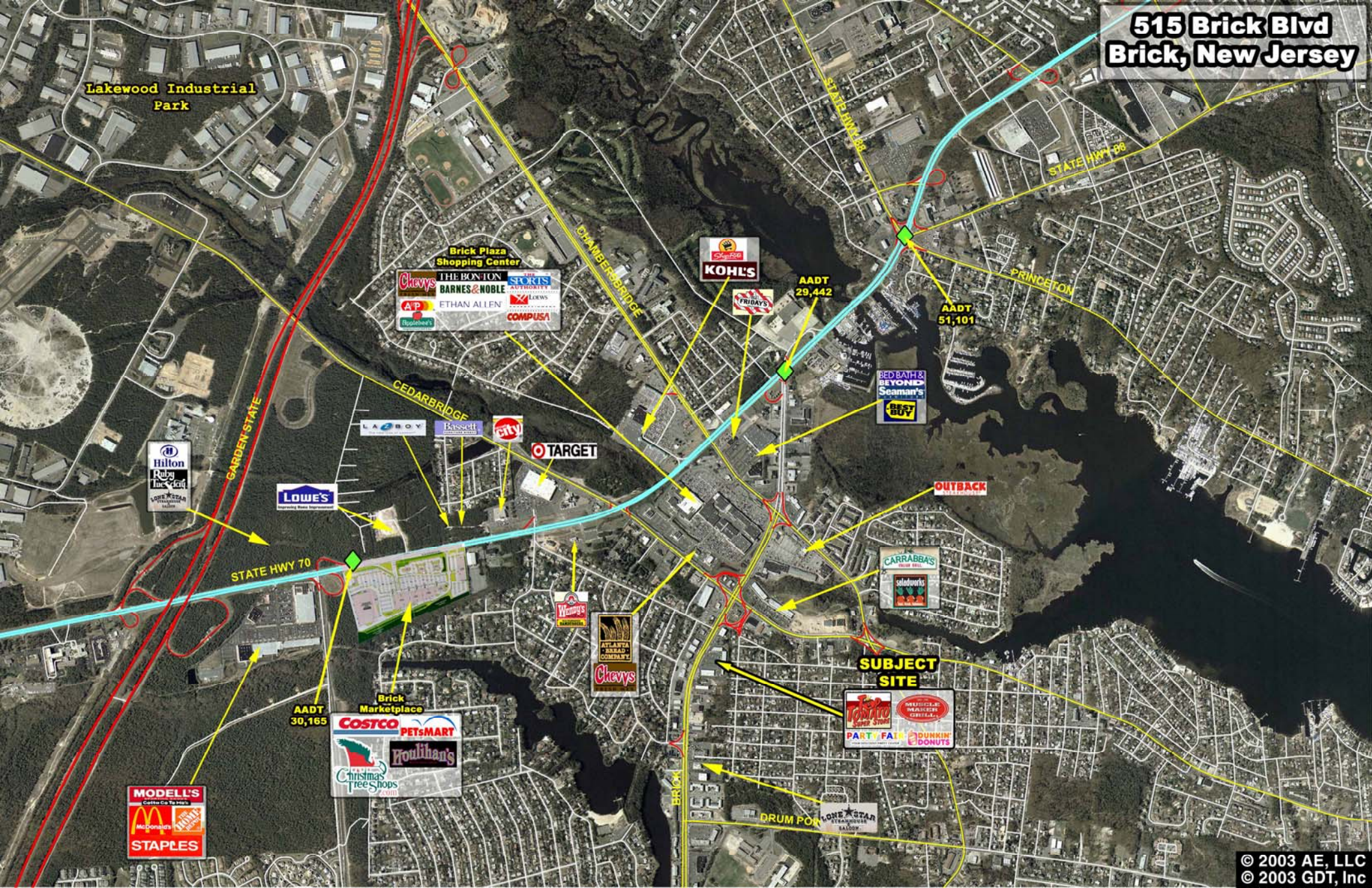


- Fully Leased Investment Sale
- Regional Trade Area Location
- Brick, Toms River & Lakewood Trade Area
- Entire Center Renovated 5 years ago
- Current NOI @ \$765,994.07 with upside

2008 DEMOGRAPHICS	1 Mile	3 Miles	5 Miles
Total Population	7,841	71,283	185,988
Total Households	3146	30,448	69,704
Median Household Income	\$68,460	\$71,346	\$80,010
Traffic Count: Brick Boulevard	25,000 VPD		Source: Sites USA

525 Milltown Road, Suite 101 North Brunswick, NJ 08902
Ph: 732-253-0888 Fax: 732-253-0887 www.RemcoRealty.net

515 Brick Blvd Brick, New Jersey



Lakewood Industrial Park

Brick Plaza Shopping Center

- Chewy's
- THE BONTON
- BARNES & NOBLE
- SPORTS AUTHORITY
- A.P.
- ETHAN ALLEN
- LOWE'S
- COMPUSA
- Rugbyhead's

KOHL'S

AADT 29,442

AADT 51,101

BED BATH & BEYOND
Seaman's
Best Buy

Hilton
Ruby
Travel Club

LOWE'S
Home Improvement

TARGET

OUTBACK

STATE HWY 70

AADT 30,165

Brick Marketplace

- COSTCO**
- PETSMART**
- Houlihan's**
- Christmas Trees & Shops

Wendy's

ATLANTA
TRUCK COMPANY
Chewy's

CARRABBA'S
saladworks

SUBJECT SITE

- TOSTITOS**
- PARTY FAIR**
- DUNKIN' DONUTS**

MODELL'S
Costco Co To Free's

- McDonald's**
- STAPLES**

DRUM POINT

LOVE STAR
RESTAURANT