

BRANCHBURG, NEW JERSEY

Former Tara Electronics

985 Route 202 (north) = at the corner of Van Dyke Road



Highway Signage



Covered Rear Entrance



Fenced Rear Yard



PRICE REDUCED !!!

FOR SALE = 2,900sf. Commercial Building

- ❖ 2,900sf. Building = Grade level on slab
- ❖ Medical / Professional Offices / Retail
- ❖ Land area = 0.628 Acres
- ❖ 14' clear ceilings = Drive-in door possible
- ❖ Ample parking = Fenced rear yard
- ❖ Zoned: RS-2 Retail Service Zone
- ❖ Close to routes; 28, 78, 202, 206 & NJ. Turnpike
- ❖ Property taxes = \$10,110.25 (2016)

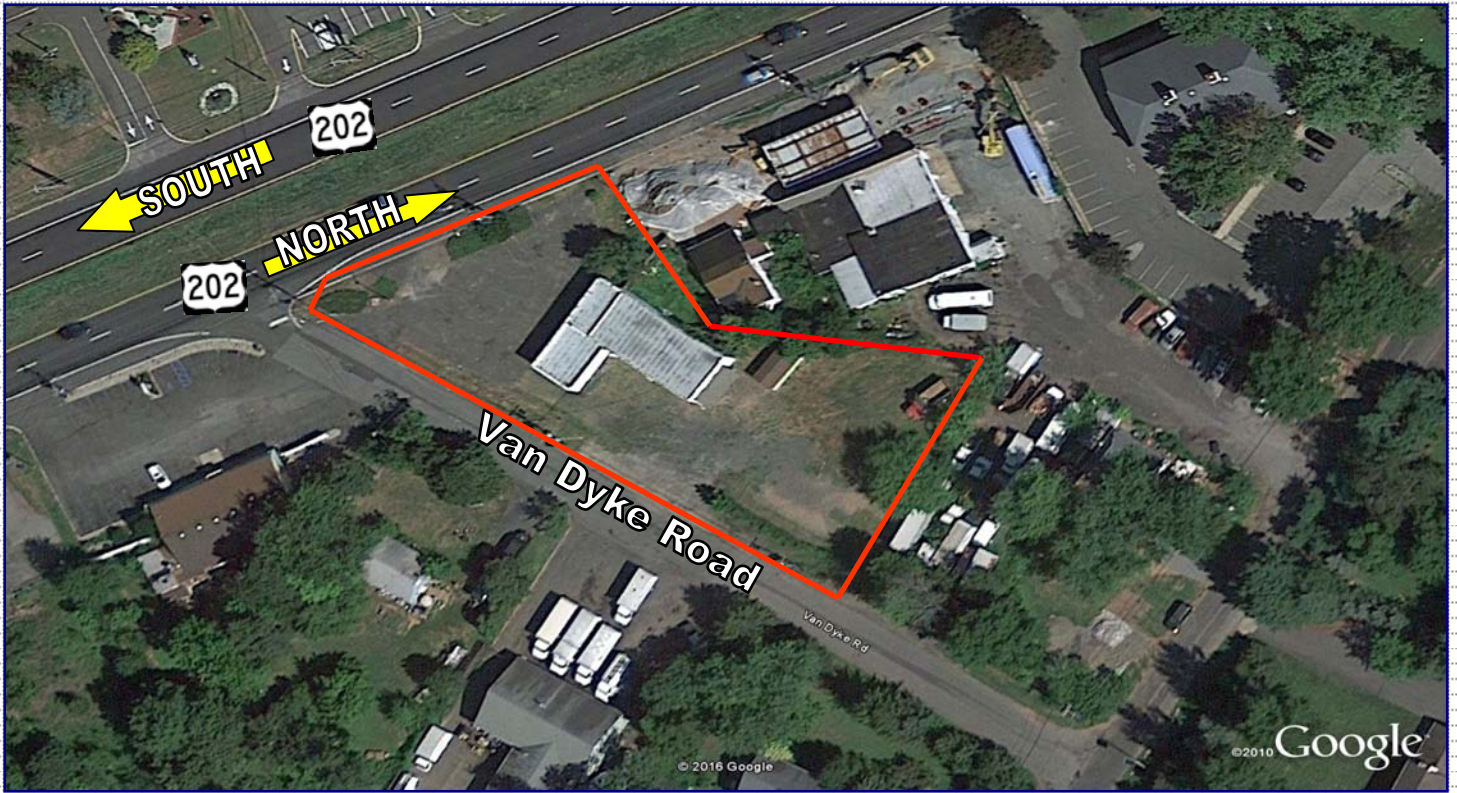
Please Contact:

PETER GALLICCHIO
 President Ext: 102
 Cell: 732-713-0227
 pgallicchio@RemcoRealty.net



2016 DEMOGRAPHICS	1 Mile	3 Miles	5 Miles
Total Population	3,683	35,988	95,305
Total Households	1,267	13,692	36,000
Median Household Income	\$144,465	\$134,993	\$128,175
Traffic Count: Route 202	AADT: 22,602 (NJ-DOT) Demos by: Geolytics		

370 Campus Drive, Suite # 128, Somerset, NJ 08873
 T: 732-253-0888 F: 732-253-0887 www.RemcoRealty.net



R

Another Remco Exclusive Offering!

R



Information provided herein was obtained from sources deemed reliable. No warranty or representation is made by Remco as to the accuracy thereto. All information SHOULD BE VARIFIED INDEPENDANTLY BY THE PROSPECT prior to proceeding. Same is hereby submitted subject to errors, omissions, change of price or measurements, or withdrawal without notice.