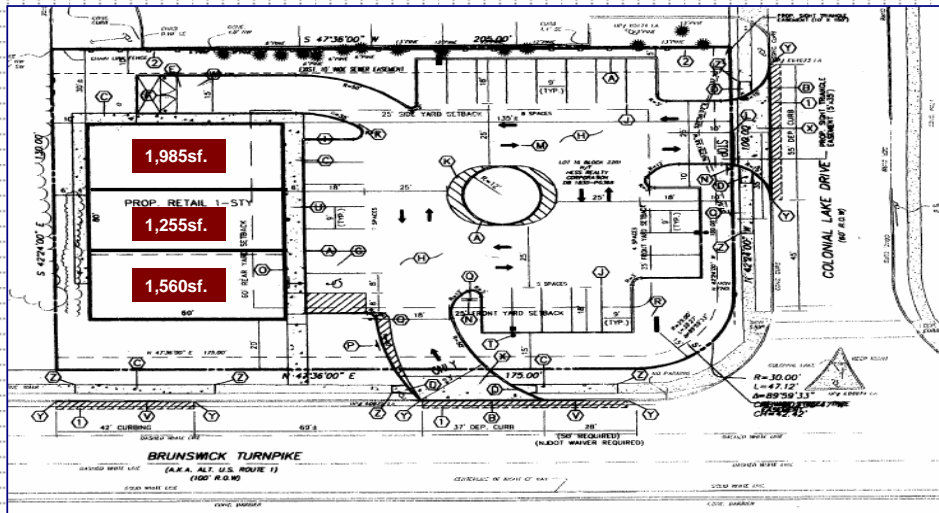




Another Remco Exclusive Offering!



Information provided herein was obtained from sources deemed reliable. No warranty or representation is made by Remco as to the accuracy thereto. All information SHOULD BE VERIFIED INDEPENDENTLY BY THE PROSPECT prior to proceeding. Same is hereby submitted subject to errors, omissions, change of price or measurements, or withdrawal without notice.

LAWRENCEVILLE, NEW JERSEY

Free Standing Retail Building

2480 Brunswick Pike - Near Darrah Lane



SALE / LEASE = 4,800sf. Retail Building



- ❖ Free-Standing = 4,800sf. (80' wide x 60' deep)
- ❖ Three Stores = 1,560sf. – 1,255sf. – 1985sf.
- ❖ User / Investor = Occupy all or a portion
- ❖ Three Panel Monument Signage
- ❖ Site = 0.596 Acres (200' x 130')
- ❖ Parking = 24 on-site / Plus on street
- ❖ **Across from Lawrence Shopping Center**
- ❖ **New Construction: Year Built = 2011**
- ❖ **Close to Routes; 1, 29, 31, 95, 195, 206 & 295**
- ❖ **Property Taxes = \$16,581.98 (2014)**

Please Contact:
PETER GALLICCHIO
 President Ext: 11
 Cell: 732-713-0227
 pgallicchio@RemcoRealty.net

2015 DEMOGRAPHICS	1 Mile	3 Miles	5 Miles
Total Population	6,899	92,750	242,042
Total Households	2,820	32,383	242,042
Median Household Income	\$68,108	\$80,566	\$92,156
Traffic Count: Brunswick Pike	AADT: 17,986 (NJ-DOT)		Demos by: Geolytics



1215 Livingston Ave, Suite # 2, North Brunswick, NJ 08902
 T: 732-253-0888 F: 732-253-0887 www.RemcoRealty.net

